

Curriculum Newsletter

Year 3

Summer 1 2023

Key Learning

English: How do authors make me feel empathy for a character?

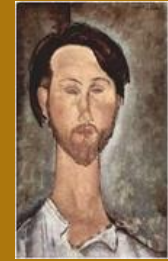
Narrative: write a chapter of the book from the point of view of a character in Charlotte's Web by E.B. White. What is the purpose of a poem? Read, explore, perform and write different forms of syllabic poetry about an animal.

Maths: What's the time? Tell and write the time from an analogue clock, including using Roman numerals from I to XII, and 12-hour clock. Exploring the link between multiplication and division, thinking about and using a variety of ways to represent them. Then using associated facts in order to solve problems. **What can I measure?** Weighing objects and reading a variety of scales using kg/g. Solving problems which involve comparing, adding and subtracting mass (kg/g). Measuring and reading a variety of scales for liquids using l/ml. Solving problems which involve comparing, adding and subtracting volume (l/ml).

Science: What is a skeleton? What do skeletons protect? What can you find out by looking at the bones? How do skeletons support movement?



Home Learning: Use the work completed in art lessons to create a self portrait, thinking about proportion and using the work by Amadeo Modigliani as inspiration.



Other Learning

Art: Can you represent objects with correct proportion? We will be investigating using correct proportion in life drawings and portraits which allow an artist to create well-balanced, realistic representations of the human form.

RE: What are the sacred places of worship?

Computing: Is word processing better than writing?

PE: Athletics and Orienteering.

PSHE: Are relationships always positive? Recognising different types of relationships and how to maintain relationships. We will explore how to fix relationships and that not all relationships are positive.

Webs and Whiskers Are all farms the same?

Hook: We have a visiting farm coming into school so the children get a taste of what farm life is like. We will explore and investigate the similarities and differences in farming in the different continents around the world.

